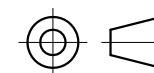


| SPECIFICATION | VALUE |
|-------------------------------------|-------------------------------------|
| RATED VOLTAGE(V) | 24 |
| NO LOAD CURRENT(mA) | 80 |
| NO LOAD SPEED w/ GEARBOX(RPM) | 82 |
| RATED LOAD TORQUE w/ GEARBOX(kg.cm) | 2.6 |
| RATED CURRENT(mA) | 190 |
| RATED LOAD SPEED w/ GEARBOX(RPM) | 65 |
| RATED POWER(W) | 2.45 |
| NO LOAD SPEED w/o GEARBOX(RPM) | 5800 |
| RATED LOAD TORQUE w/o GEARBOX(g.cm) | 52 |
| RATED LOAD SPEED w/o GEARBOX(RPM) | 4600 |
| RATIO | 71 |
| MAX.PERMISSIBLE TORQUE(kg.cm) | 20 |
| MAX. PERMISSIBLE AXIAL LOAD(N) | ≤10 |
| MAX. PERMISSIBLE RADIAL LOAD(N) | ≤20 (6mm FROM THE MOUNTING SURFACE) |

NOTES:

- PLEASE CONDUCT THE WELDING WORK IN A SHORT TIME.(RECOMMENDATION:WITH THE SOLDERING IRON TIP AT A TEMPERATURE OF 340~400°C, WITHIN 2 SECONDS.
- PREVENT GEAR MOTOR FROM BEING SHOCKED OR DROPPING IN MOUNTING PROCESS.IT IS PROHIBITED TO STRIKE AND CRUSH DIRECTLY ON REDUCER OUTPUT SHAFT.
- INSTALL THE SCREWS AFTER FIRST CHECKING THE TAPS AND TAP DEPTH AGAINST THE DIMENSIONS ENTERED ON THE EXTERIOR DRAWING.
- IT IS NECESSARY TO BE CAREFUL THAT THE ADHESIVE DOES NOT SPREAD ALONG THE SHAFT AND FLOW INTO THE BEARING.
- DO NOT TURN A GEARED MOTOR BY ITS OUTPUT SHAFT WHEN, FOR EXAMPLE, ARRANGING ITS POSITION SO AS TO INSTALL IT.



SKYSMotor

| | | | |
|-------|-----------|--|-----------|
| | APVD | | 9.27.2022 |
| | CHKD | | |
| 1:1 | DRN | | |
| SCALE | SIGNATURE | | DATE |

DC GEARBOX MOTOR

PA28-28245800-G71