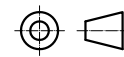


SPECIFICATION	CONNECTION	VALUE
GEAR RATIO		10
EFFICIENCY		96.00%
BACKLASH@NO-LOAD(arcmin)		<=15
MAX.PERMISSIBLE TORQUE(Nm)[lb-in]		10.00[88.51]
MOMENT PERMISSIBLE TORQUE(Nm)[lb-in]		20.00[177.01]
GEARBOX MATCHING MOTOR'S INPUT SHAFT LENGTH (mm)		21~24
NOISE(dB)		<=60
WATERPROOF RATING		IP54
LIFE(h)		20000
AMBIENT TEMPERATURE		-10°C~90°C[14°F~194°F]



SKYSMotor

	APVD		3.2.2021
	CHKD		
2:3	DRN		
SCALE	SIGNATURE		DATE

PLANETARY GEARBOX

TQEG23-G10-D10